



Tuxford Academy
Excellence through Teamwork

Welcome to
Tuxford Academy



Diverse
Academies

Welcome from the Principal

It is with great pride that I introduce you to our academy – which is amongst the best in the country and has continuously held an outstanding Ofsted status since 2009.

The combination of high quality educational standards, strong values and extracurricular opportunities makes places at our academy sought after across the county.

Fantastic outcomes are achieved at Tuxford by focusing on the key elements of any outstanding academy – high quality teaching and learning, high standards of behaviour and uniform, a clear focus on achievement, community spirit, and high quality leadership and management in every aspect of our work.

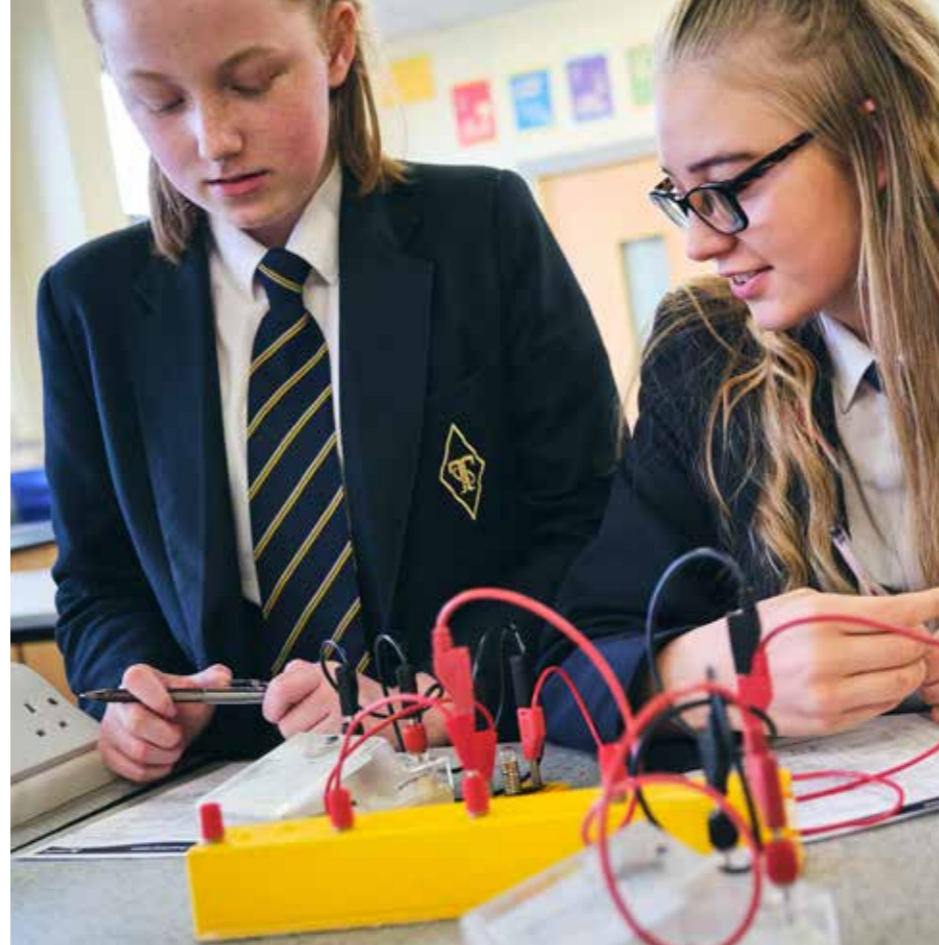
Visitors often comment on the positive atmosphere, the polite, smartly dressed students and a strong sense of purpose that exists in our academy. This is only possible by working in partnership with parents and we plan to strengthen these relationships even further.

We hold an annual open evening every September and run term-time visits all year round, so I hope that you will have the chance to experience our academy for yourself.

I look forward to meeting you.



Jon Hardy
Principal



Life at Tuxford

We have extremely high expectations of our students and staff, and ensure that our academy is an engaging, warm and welcoming place to learn and work.

Tuxford is a large academy and many of our students are from small rural communities. We place great emphasis on helping all individuals feel at home and settled as quickly as possible. Students join a small, vertical tutor group for the whole of their time at the academy.

A small number of students from years 7-11 are placed in each tutor group, totalling around 20 students per group.

The academy has four colleges, Ash, Beech, Oak and Willow. These are led by heads of colleges and supported by a progress leader.

We have great pride in our student leadership team, made up of college presidents and faculty ambassadors, who help to organise inter-college events, and contribute to the development of the pastoral system to ensure the student voice is fully represented. They also oversee the college improvement forums and organise activities within each faculty.

We ask that parents support us at home – whether by helping with homework, encouraging extracurricular activities, helping with revision or simply by communicating with us when they feel we could be doing something differently.

Likewise, we know that our students' parents and carers place a huge amount of trust in us. We aim to ensure that we give your children the best possible opportunities and go the extra mile in all that we do for them.

A number of services are available to students, such as mindfulness and mental health support, and we also have a counselling service. Students can bring any issue to counselling, there is nothing too big or too small. Our counsellor is trained to work with many of the issues that young people face today.

Our college system



Ash



Beech



Oak



Willow

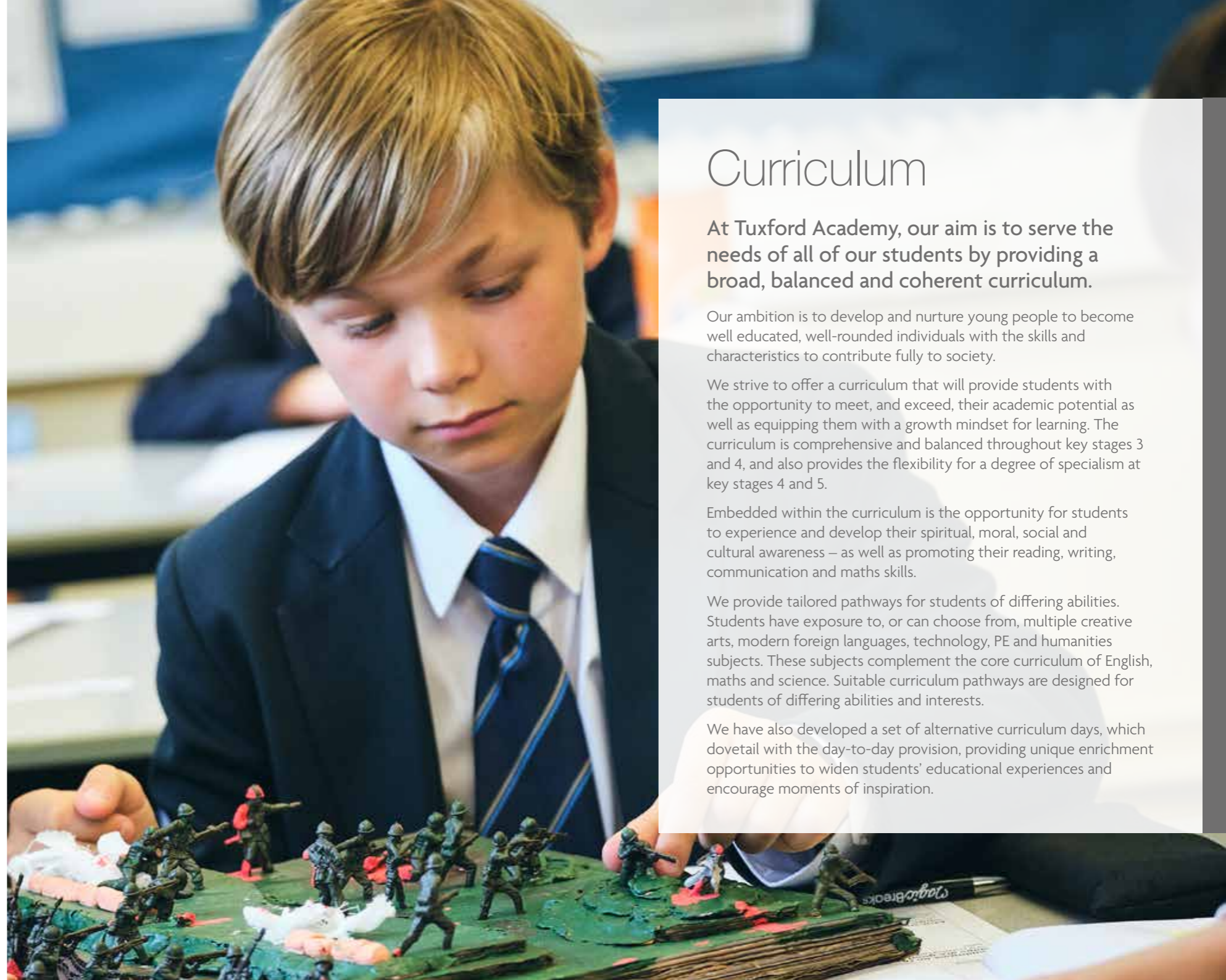


Post 16

With a large selection of A Level and Level 3 on offer, many of our students choose to stay on at our post 16 centre after key stage 4. Our high quality, engaging and stimulating lessons enable students to develop a deeper understanding and enjoyment of their subjects.

We offer a wide choice of enrichment activities, to help students to develop skills beyond the curriculum and to prepare them for their future pathways. All students in year 12 undertake work experience to help build employability skills.

More students than ever are gaining their first choice of university – with many taking up places at Russell Group universities. The vocational route is also increasing in popularity and our links with local employers have helped many students gain higher apprenticeships.



Curriculum

At Tuxford Academy, our aim is to serve the needs of all of our students by providing a broad, balanced and coherent curriculum.

Our ambition is to develop and nurture young people to become well educated, well-rounded individuals with the skills and characteristics to contribute fully to society.

We strive to offer a curriculum that will provide students with the opportunity to meet, and exceed, their academic potential as well as equipping them with a growth mindset for learning. The curriculum is comprehensive and balanced throughout key stages 3 and 4, and also provides the flexibility for a degree of specialism at key stages 4 and 5.

Embedded within the curriculum is the opportunity for students to experience and develop their spiritual, moral, social and cultural awareness – as well as promoting their reading, writing, communication and maths skills.

We provide tailored pathways for students of differing abilities. Students have exposure to, or can choose from, multiple creative arts, modern foreign languages, technology, PE and humanities subjects. These subjects complement the core curriculum of English, maths and science. Suitable curriculum pathways are designed for students of differing abilities and interests.

We have also developed a set of alternative curriculum days, which dovetail with the day-to-day provision, providing unique enrichment opportunities to widen students' educational experiences and encourage moments of inspiration.

Facilitating learning

The working environment at the academy is modern and attractive, reflecting not only our beautiful setting but also the high standards that we expect of our students.

Students enjoy using our purpose built science labs, arts centre, design and technology equipment, sports facilities, music rooms and kitchens. The building also boasts numerous quiet study areas for reflective thought, independent study or quiet reading.

The PE department offers excellent facilities, with a well-equipped sports hall and gymnasium alongside a hi-tech multi-gym. Outside facilities comprise of a full size astroturf pitch, tennis courts and extensive playing fields.

We also ensure that effort is put into displays, which are designed to be stimulating and informative for all, promoting achievements and rewarding excellent work. As a result, our building is a vibrant, welcoming and interesting space in which to learn and work.

From our orchard to our herb plot, vegetable patches and butterfly garden, our RHS award-winning gardens provide ample opportunities for green-fingered students, and a place of reflection and inspiration for staff and students alike.



“Students enjoy using our purpose built science labs, arts centre, design and technology equipment, sports facilities, music rooms and kitchens!”

Enriching young minds

The key to excellence in education is to focus on much more than what happens in the classroom, and we believe that it is crucial to develop the whole child. By giving our students a varied programme of extracurricular activities, clubs, trips and responsibilities to choose from, we can help them to find their passion and grow socially, emotionally and physically into well-rounded young adults.

All students also have the opportunity to act as leaders of activities, meetings and teams, as well as the chance to take on roles such as college presidents, prefects, lunchtime supervisors, form representatives and ambassadors.

As an academy, we are passionate about the arts, with extensive and modern facilities in drama, music, art, and design and technology. We stage full scale academy performances, which are widely renowned for being of a professional quality, and welcome an audience of over 1,000 people throughout the course of the week.

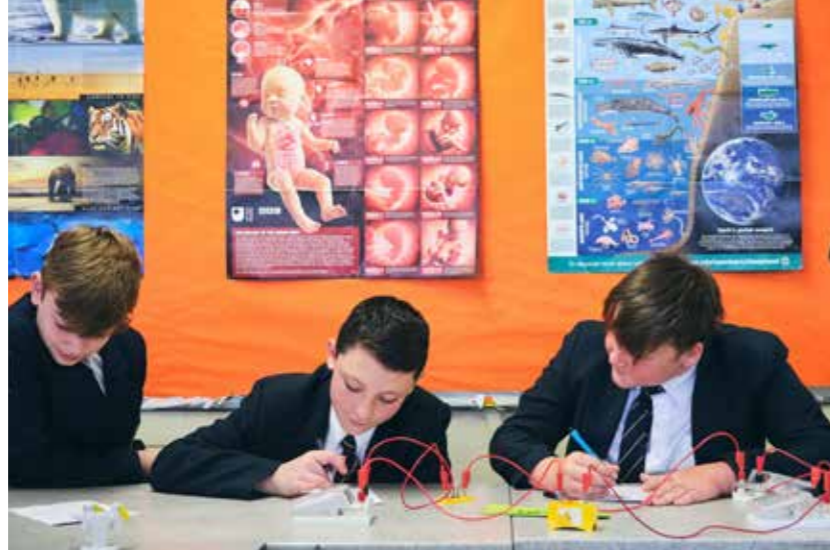
These performances offer students the chance to showcase their talents in acting, lighting, make-up, set design, sound engineering and much more.

Our enrichment timetable is refreshed every term, and includes a wide and varied choice of clubs and activities, such as gardening, astronomy, reading, chess, sports, martial arts, music, craft, dance, Duke of Edinburgh Award, drama, mindfulness and bird watching.

We also offer a number of trips every year, including residentials to places such as Paris, London and Lisbon.



“As an academy, we are passionate about the arts!”



‘ We are so proud of our son – he constantly surprises and delights us. He has always seen Tuxford as a large family and I know he will be sad to leave.’
Parent



‘ We visited a number of other schools with ‘outstanding’ Ofsted reports, but Tuxford Academy stood out for us. It then surpassed all our expectations.’
Parent



‘ The academy’s very high expectations and exceptional support and guidance ensure that students, including those facing barriers to engagement and achievement, are given every opportunity to succeed.’
Ofsted

‘ The academy promotes exceptionally well the students’ spiritual, moral, social and cultural development by encouraging them to be reflective and to value one another’s qualities and differences.’
Parent



Admissions

Our academy is very popular and we receive many more applications than the places that we have available.

Nottinghamshire County Council continues to administer the admissions process for Tuxford Academy and entry is based upon the admissions criteria.

Please check our admissions policy and catchment map carefully to ensure you are eligible for a place at Tuxford – these documents can be found on our website.

We hold an open evening during September and, throughout the year, we also offer daytime tours of Tuxford Academy for prospective parents and students – please call us on **01777 870001** or email **office@tuxford-ac.org.uk** to book.

Diverse Academies Learning Partnership

Tuxford Academy is part of the Diverse Academies Learning Partnership – a group of academies committed to the development and improvement of schools through collaboration and partnership. Our core focus is the achievement and development of each individual student. We have an established framework of core principles and practice to which all academies subscribe, whilst maintaining and developing each academy's unique identity and individual characteristics.

For more information, visit www.dalp.org.uk



Diverse Academies





Tuxford Academy

Excellence through Teamwork

Tuxford Academy
Marnham Road, Tuxford, Newark, Nottinghamshire, NG22 0JH

Phone: **01777 870001**

Email: **office@tuxford-ac.org.uk**

www.tuxford-ac.org.uk

Diverse Academies Learning Partnership is a partnership between the Diverse Academies Trust (Old Hall Drive, Retford, Nottinghamshire, DN22 7EA; registered company number 07664012) and the National Church of England Academy Trust (Annesley Road, Hucknall, Nottinghamshire, NG15 7DB; registered company number 07708713). Not for profit charitable trusts with exempt charity status, registered in England and Wales.